

Loudspeakers and Accessories



Search

Home | Single Drivers / Accessories | Kits | Car-Hifi | High End | Industry | Public Address |

High End

Fullrange Systems
Woofers
Bass Midranges
Cone Midranges

Dome Midranges

DSM 50 FFL 8 OHM
G 50 FFL 8 OHM

Horn Midranges
Ribbon Tweeter
Dome Tweeters
Horn Tweeters
Coaxial Speakers
Magnetically Shielded
Speakers

DSM 50 FFL 8 OHM

Art. No. 1163

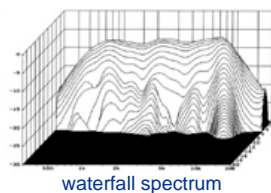
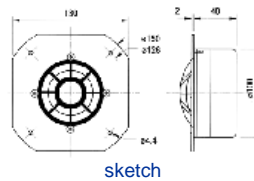
50 mm (2") High-End titanium dome driver for the midrange band between 800 and 5000 Hz. Due to the enormously strong and ultra-light titanium dome and in conjunction with a highly damped surround, linear frequency response and no partial oscillations. Due to the enormously high magnetic flux in the ferrofluid-filled air-gap a high efficiency and high power handling are possible.

Used in / Accessories:

CASABLANCA MK IV
Spare diaphragms
ATLAS COMPACT MK V

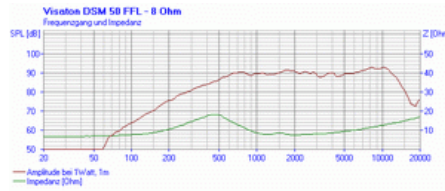


◀ Zoom ⓘ Messen ▶



Technical Data:

Nominal power handling with high pass	120 W (12 dB/Okt.; 800 Hz)
Peak power handling with high pass	180 W (12 dB/Okt.; 800 Hz)
Nominal impedance Z	8 Ohm
Frequency response	400–15000 Hz
Mean sound pressure level	90 dB (1 W/1 m)
Opening angle (-6 dB)	180°/4000 Hz
Resonance frequency fs	430 Hz
Magnetic induction	1,4 T
Magnetic flux	880 μWb
Height of front pole-plate	3,5 mm
Voice coil diameter	50 mm
Height of winding	3 mm
Cutout diameter	106 mm
Net weight	1,26 kg
D.C. resistance Rdc	6,7 Ohm
Mechanical Q factor Qms	1,19
Electrical Q factor Qes	0,7
Total Q factor Qts	0,44
Equivalent volume Vas	0,05



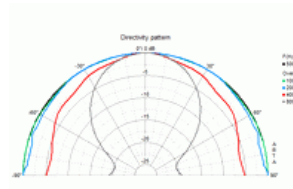
frequency- and impedance response

Effective piston area S_d
 Dynamically moved mass M_{ms}
 Inductance of the voice coil L

20 cm²
 1,2 g
 0,16 mH

Similar Products

G 50 FFL 8 OHM



directivity pattern